

22

TWENTY TWO XP



PRINCIPAL SPECIFICATION

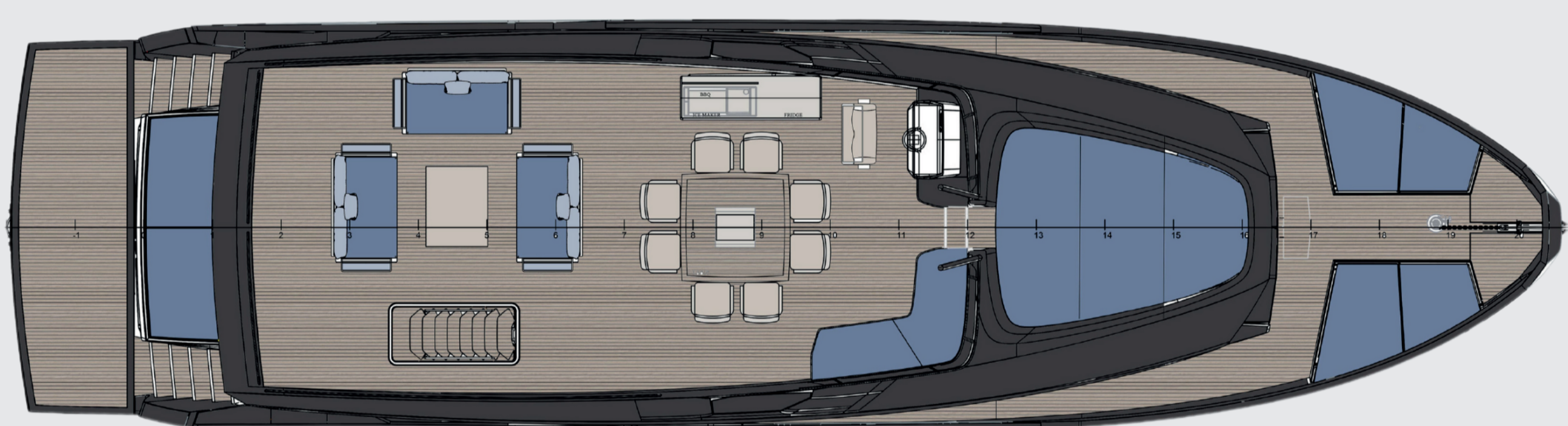
Length overall	22.60 m / 72.17 ft	Max Speed	13 knots
Beam	6.00 m / 19 ft	Cruise Speed	9 knots
Draft	1.84 m / 6.17 ft	Economic Speed	8 knots
Displacement	59 tonnes	Range	1.500 nm @8knots
Fuel Capacity	6,000 lt / 1,320 gal	Int. Gross Tonnage	under 150 GT
Cabin	3/4 +1	Engines	Twin Cummins 425hp Intermittent Duty
Accommodation	6/8 + 2	Planing Hull	Twin MAN V8 1200 HP
		Optional Engine	

CONSTRUCTION

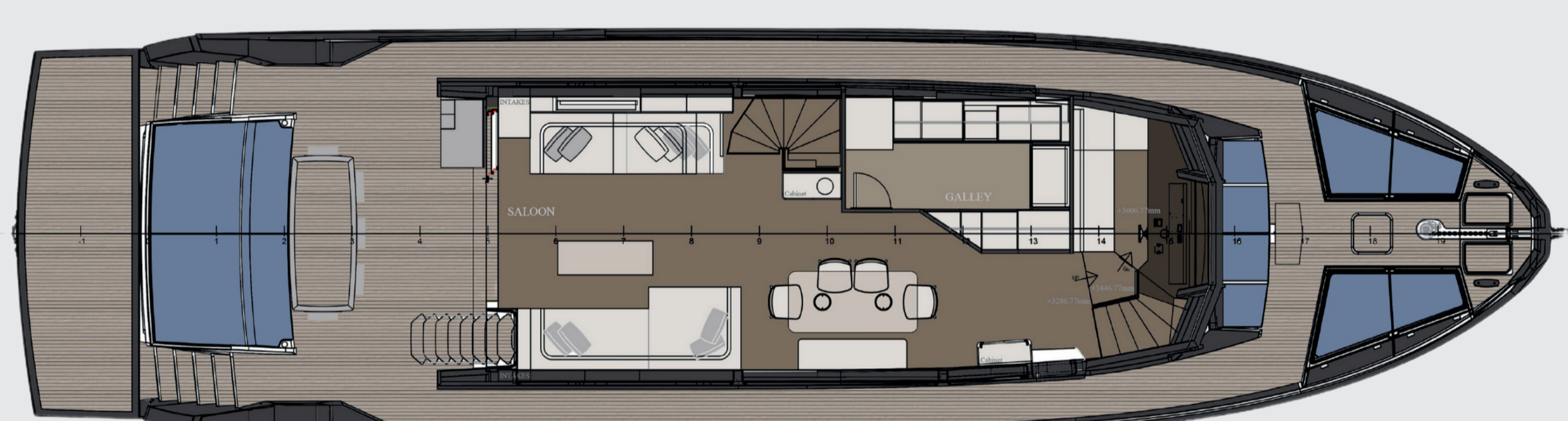
Hull + Superstructure Material

- FRP Composite

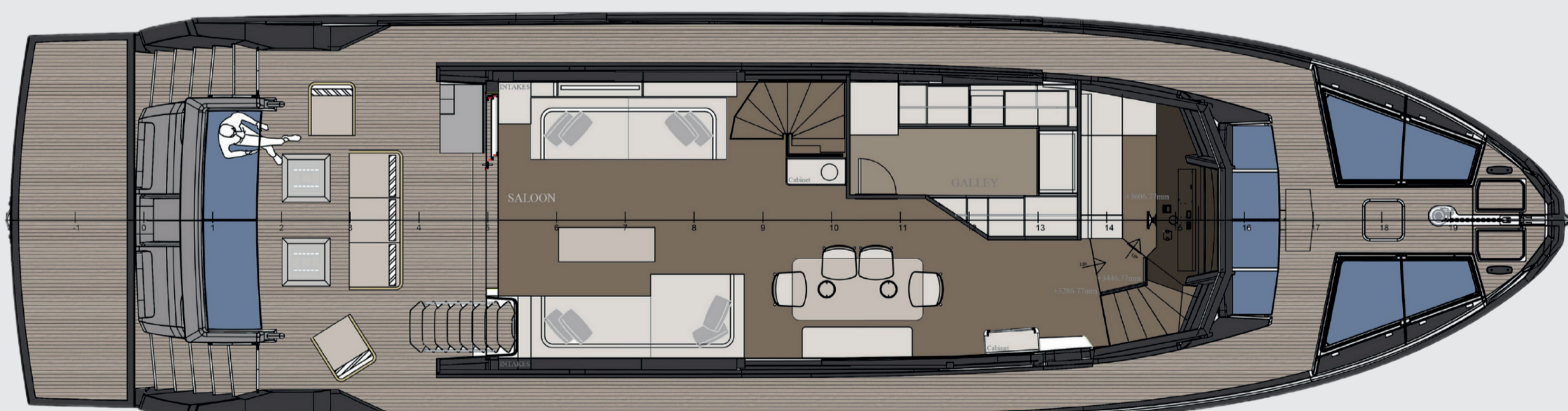
Flybridge



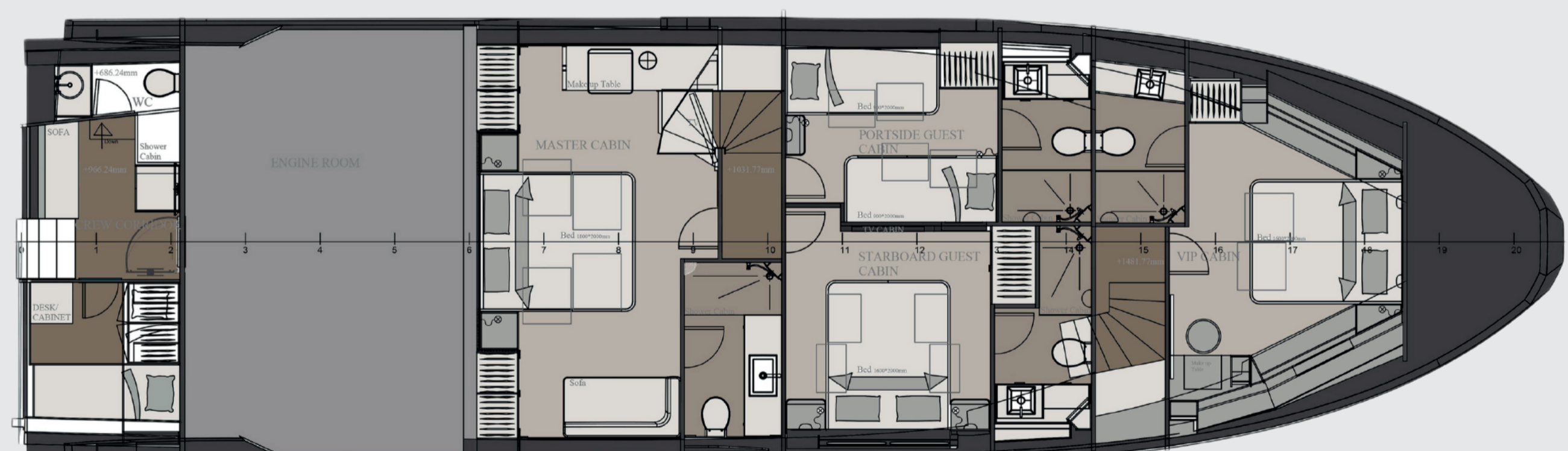
Main Deck



Main Deck Lounge Version



Lower Deck 4 Cabin



Lower Deck 3 Cabin

